



Coach Tourism The Road to Recovery





Road Map out of Lockdown

NATIONAL LOCKDOWN

STAY AT HOME

National Lockdown in England

The Health Protection (Coronavirus, Restrictions) (All Tiers) (England) Regulations 2020

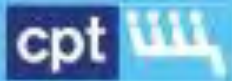
No person may leave or be outside of the place where they are living without reasonable excuse



HM Government

NATIONAL LOCKDOWN

STAY AT HOME



www.cpt-uk.org



@cpt-uk



~~National Lockdown in England~~

The Health Protection (Coronavirus, Restrictions) (All Tiers) (England) Regulations 2020

~~No person may leave or be outside of the place where they are living without reasonable excuse~~



The Health Protection (Coronavirus, Restrictions) (Steps) (England) Regulations 2021

cpt 
www.cpt-uk.org

 **f**
[@cpt-uk](https://www.facebook.com/cpt-uk)

 **t**
[@cpt_uk](https://twitter.com/cpt_uk)

cpt 

 HM Government

STEP 1

29 MARCH

 BUSINESS / ACTIVITIES	 SOCIAL CONTACT	 TRAVEL
<p>Organised outdoor sport (children and adults)</p> <p>Outdoor sport and leisure facilities</p> <p>All outdoor children's activities</p> <p>Outdoor parent & child groups (up to 15 people, excluding under 5s)</p>	<p>Rule of 6 or two households outdoors</p> <p>Household only indoors</p>	<p>Minimise travel</p> <p>No domestic or international holidays</p>

COVID-19 ROADMAP 2021



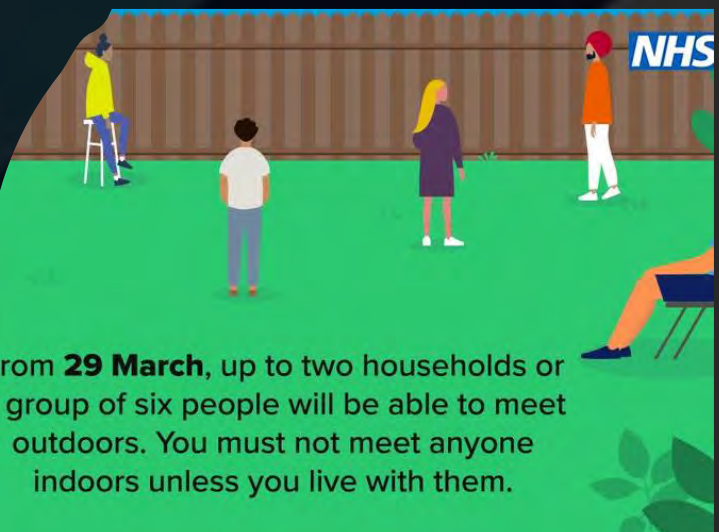
TRAVEL FOR LEISURE PURPOSES ALLOWED

From **29 March**, outdoor sports facilities such as tennis and basketball courts will reopen.

Guidance says:

Minimise Travel

From **29 March**, up to two households or a group of six people will be able to meet outdoors. You must not meet anyone indoors unless you live with them.



The 'stay at home' rule will end on **29 March**, but you should minimise travel where possible.

You should not stay overnight away from home.



The 'stay at home' rule will end on **29 March**, but you should continue to work from home where possible.



From **29 March**, the 'stay at home' rule will be lifted but you still need to minimise travel where possible.

Let's take the next step safely.



12

APRIL

most outdoor attractions, zoos,
theme parks
outdoor hospitality venues (serving
seated patrons)
drive-in cinemas
non-essential retail
personal care premises
gyms and similar indoor leisure premises
self-contained accommodation (campsites and
holiday lets with no shared facilities)

HM Government

STEP 2

NO EARLIER THAN 12 APRIL
At least 5 weeks after Step 1

BUSINESS / ACTIVITIES	LARGER EVENTS	TRAVEL
All retail Personal care Libraries and community centres Most outdoor attractions Indoor leisure inc. gyms (individual or household use only)	Self-contained accommodation All children's activities Outdoor hospitality Indoor parent and child groups (up to 15 people, excluding under 5s)	Funerals (30 people) Weddings, wakes, receptions (15 people) Event pilots Domestic overnight stays (household only) No international holidays

COVID-19 ROADMAP 2021



the accommodation sector, including hotels, hostels and B&Bs
indoor hospitality venues (serving seated patrons)
residential educational trips

indoor entertainment venues
sporting and other events in outdoor venues with capacity restrictions
sporting and other events in indoor venues with capacity restrictions
30 people will be able to attend weddings and other significant life events

HM Government			
STEP 3			
NO EARLIER THAN 17 MAY At least 5 weeks after Step 2			
BUSINESS / ACTIVITIES	SOCIAL CONTACT	LARGER EVENTS	TRAVEL
Indoor hospitality Indoor entertainment and attractions Organised indoor sport (adult) Remaining accommodation Remaining outdoor entertainment (including performances)	Maximum 30 people outdoors Indoors: Up to 6 people or a larger group from 2 households only (subject to review)	Most significant life events (30 people) Indoor events 1,000 people or 50% capacity (whichever is lower) Outdoor events 4,000 people or 50% capacity (whichever is lower) Large seated outdoor venues 10,000 people or 25% capacity (whichever is lower)	Domestic overnight stays International travel (subject to review)
COVID-19 ROADMAP 2021			

Coronavirus (COVID-19): Safer transport – guidance for operators

Safer working principles and risk assessment for transport operators
and organisations

11 May 2020

← Updated 29 March



cpt 
www.cpt-uk.org
 @cpt-uk
 @cpt_uk

cpt 



COVID-19 SECURE

COMPLIANT WITH UK GOVERNMENT COVID-19
RISK MANAGEMENT GUIDANCE

These rules do not place any **capacity constraints** on public transport services and private hire vehicles, **including organised coach travel**

Operators should continue to provide transport services that can accommodate separate **multiple groups** which conform to the requirements of the relevant social contact rules






 HM Government



In England from 4 July,
where it's not possible to stay 2 metres apart
keep a distance of 1 metre + precautions



Precautions such as

-  Wearing a face covering
-  Keeping interactions brief
-  Following the COVID-19 Secure guidelines wherever you are

STAY ALERT ▶ CONTROL THE VIRUS ▶ SAVE LIVES

Operators are
expected to undertake
a COVID Secure
Risk Assessment



cpt 
www.cpt-uk.org
 @cpt-uk
 @cpt_uk

cpt 

HM Government **STEP 4**
NO EARLIER THAN 21 JUNE
 At least 5 weeks after Step 3

 BUSINESS / ACTIVITIES	 SOCIAL CONTACT	 LARGER EVENTS	 TRAVEL
Remaining businesses, including nightclubs (subject to review)	No legal limit (subject to review)	No legal limit on life events (subject to review) Larger events (subject to review)	Domestic overnight stays (subject to review) International travel (subject to review)

June 2021

M	T	W	T	F	S	S
	1	2	3	4	5	6
7	8	9	10	11	12	13
14	15	16	17	18	19	20
21	22	23	24	25	26	27
28	29	30				

ALL LIMITS ON SOCIAL GATHERINGS REMOVED
INTERNATIONAL TRAVEL POSSIBLY ALLOWED

SOCIAL DISTANCING REQUIREMENTS WILL BE REVIEWED PRIOR TO THIS DATE AND MAY BE REMOVED

Scotland



www.cpt-uk.org

2 April : Stay at Home becomes Stay Local

5 April : Lockdown will begin to be lifted

[@cpt-uk](https://www.facebook.com/cpt-uk)

19 April : All students will have returned to Schools

26 April : Travel Restrictions will be ended. Return to a region based tiered system (with aim for all of Scotland to be a new Level 3 or lower) allowing for non-essential shops, bars, restaurants, gyms to re-open

17 May : Most Level 3 move to Level 2

Early June : Level 2 to 1 and possibly Level 0 by end of June



The Scottish
Government
الحكومة
الاسكتلندية
na h-Alb

Cymru (Wales)

27 March : Stay Local requirement removed, and self-contained accommodation re-opened. Some outdoor venues and gardens re-opened. Travel into and out of Wales only allowed for essential reasons

1 April : Further Review of Restrictions aimed at giving Hospitality and non-essential retail "the certainty that it's looking for"

12 April : Remaining retail and close contact services may re-open, all students will return to school. Travel into and out of Wales for non essential reasons may be allowed

22 April : Outdoor attractions and hospitality venues could re-open, as well as weddings and other indoor and outdoor activities





Backing Britain's Coaches

million
by coach
year

coach
tourism
contributes

£14
billion

to the economy
each year

