



**PORT OF
DOVER**

Ferry Terminal Coach Operation

May 2023



Follow the A20 and turn towards the Cruise Terminal at the Limekiln Roundabout

Exit and follow A20 Ferry Terminal

Coach Processing - Boat yard



Security Gate



Follow Ferry Terminal Coach Diversion signs.

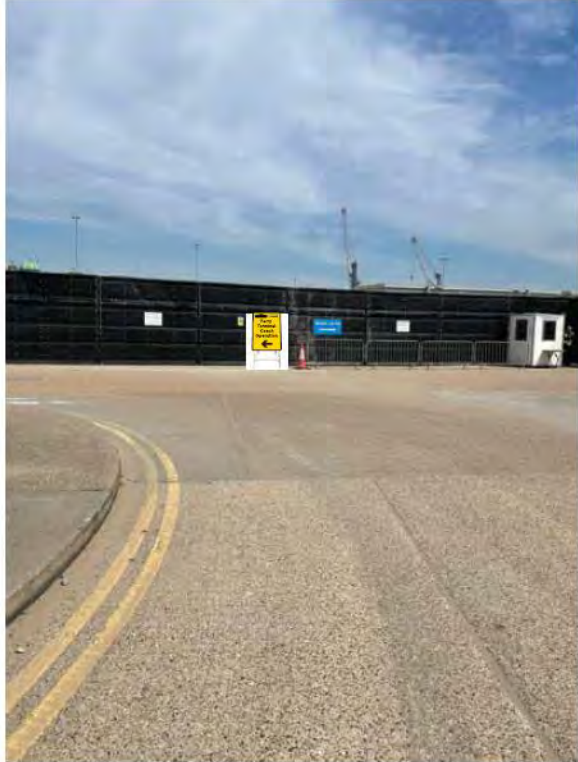
Dover Cruise Terminal



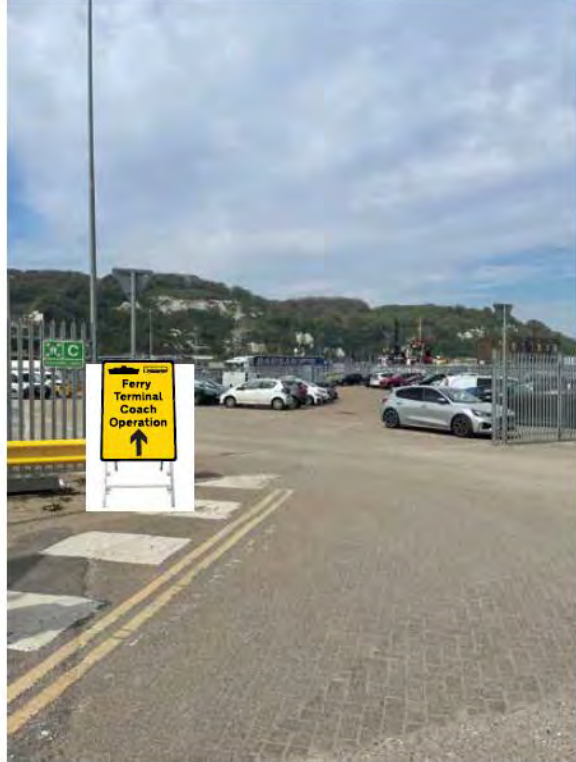
Coach Operation Route



Location 1: Junction Gate Cruise Terminal



Location 2: Western Jet Foil



Location 3: Pink Car Park Entrance



Location 4: Exit Pink Car Park



Coach Operation Route



Location 5: Motis Yard



Location 6: DVSA Car Parking



Location 7: Boatyard Water filling



Location 8&9: Union Street Car Parking



Notes

1. Only turn up within your three hour booking window. You will be turned away if you arrive early.
2. There will be a sequencing process in place and you will be given a number on arrival at the facilities. All coach traffic will be expected to use this facility and any coaches arriving at the Ferry Terminal without a number will be exited.
3. Please make sure you have sufficient food and water on board.
4. Please ensure that your toilet facilities have been emptied before arriving at the Port.
5. Ensure all individuals on board have their personal passports open and ready before the Border Controls. This includes all school groups. Bags of passports will not be accepted at the Border.